

General Information

Venue

Osaka International Convention Center (Grand Cube Osaka) <http://www.gco.co.jp>
RIHGA Royal Hotel Osaka <http://www.rihga.co.jp/osaka>

Grand Cube Osaka is located in Nakanoshima, which has long served as the most primary base for cultural and economic exchange in Osaka, and has the best of urban functionality and a variety of transportation systems.

Providing the world renowned hospitality for more than 70 years, RIHGA Royal Hotel Osaka is the largest hotel in western Japan, and is connected through a corridor to Grand Cube Osaka.

Address: 5-3-51, Nakanoshima Kita-ku, Osaka 530-0005 JAPAN
Tel: 06-4803-5555 Fax: 06-4803-5620



Osaka International Convention Center and RIHGA Royal Hotel Osaka (left)

Registration

Registration desk is open during the following hours on the 10th floor (5th floor on Nov. 15 morning only):

Sunday, Nov. 14:	15:00 – 20:00
Monday, Nov. 15:	8:00 – 12:00 (5F), 13:00 – 18:00 (10F)
Tuesday, Nov. 16:	8:30 – 18:00
Wednesday, Nov. 17:	8:30 – 17:00
Thursday, Nov. 18:	8:30 – 15:30

Each participant will receive a name badge when registering. All participants are required to wear the name badge at all time while in the congress venue. This badge will serve as your admission to all the scientific sessions, exhibition and official functions included in your registration fee. Accompanying persons are also required to wear their name badges during all official functions that they attend.

Note to Audience

Official Language

English

Simultaneous Interpretation

Simultaneous interpretation from Japanese to English will be provided for the plenary lecture by Mr. Kazuo Inamori on Monday, Nov. 15, which will be delivered in Japanese. Non-Japanese speakers will receive a receiver at the entrance of the Main Hall.

Please be sure to return the receiver when exiting the Main Hall.

Also, please be advised that interpretation from English to Japanese will NOT be provided.

Photography

Photography is prohibited during all the technical sessions.

Internet Access

Wireless internet access is available in each room.

Abstract Print-out Service

Sets of PCs and printers are available at Room 701 to print out the abstracts you may need.

Open hours: Monday, Nov. 15: 13:00 – 18:00
Tuesday, Nov. 16: 8:30 – 18:00
Wednesday, Nov. 17: 8:30 – 17:00
Thursday, Nov. 18: 8:30 – 15:30

Exhibition

Event hall, 3F

Open hours: Monday, Nov. 15: 10:00 – 17:00
Tuesday, Nov. 16: 9:00 – 15:00

Cloak

Cloakroom is located on the 10th floor in the following business hours.
Please be sure to retrieve your belongings before closing.

Open hours: Sunday, Nov. 14: 15:00 – 20:30
Monday, Nov. 15: 8:00 – 18:30
Tuesday, Nov. 16: 8:30 – 18:30
Wednesday, Nov. 17: 8:30 – 17:45
Thursday, Nov. 18: 8:30 – 17:00

Proceedings

The proceedings of ICC3 will be published on line (open access) in "IOP (Institute of Physics, UK) Conference Series: Materials Science and Engineering (MSE)". (It will not be published in the form of hard copy, CD, nor any memory devices etc.)

Instructions for manuscript preparation and submission are available in our website at: <http://www.ceramic.or.jp/icc3/proceedings.html>.

The deadline of the submission is Nov. 18, 2010.

For any inquiry or assistance, please contact the journal office at: mse@iop.org

Secretariat Office

Secretariat office is located on the 10th floor.



General Information

Welcome Reception

Sunday, November 14 18:00 - 20:00

Room 1001 – 1003, Osaka International Convention Center, 10F

*All registrants and accompanying persons are invited free of charge.

Light meals and beverages will be served.

Banquet

Wednesday, November 17 18:00 - 20:00

Banquet Room “KORIN”, Rihga Royal Hotel, 3F

*Banquet fee is NOT included in the registration fee for participants and accompanying persons. If you have not purchased a ticket but wish to attend, please visit the on-site registration desk for any remaining tickets.

Please be advised that the tickets will be sold on first-come-first-served basis.

Related Events

ICF Related Meeting

Wednesday, November 17

13:00-13:15	Room 1203, 12F	ICF Nomination Committee Meeting
13:20-14:30	Room 1203, 12F	ICF Executive Committee Meeting
14:30-15:00	Room 1203, 12F	ICC Steering Committee Meeting
15:00-16:30	Room 1202, 12F	ICF Council Meeting

IEA Related Meeting

Wednesday, November 17

9:00-12:00 Room 1203, 12F IEA Meeting

CerSJ Related Meeting

Tuesday, November 16

12:30-13:30 Conference Hall, 12F

Organizer Meeting of the 24th Fall Meeting of the Ceramic Society of Japan

JSPS Related Meeting

Wednesday, November 17

3rd JSPS A3 Foresight Program International Seminar on Multi-functional Ceramic Materials Based on Nanotechnology

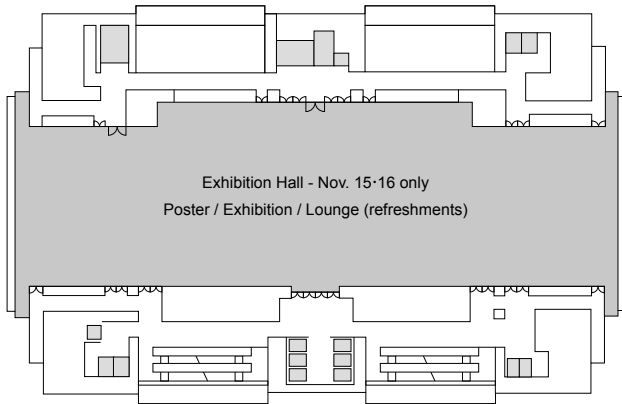
Venue: To be announced (Osaka International Convention Center)

Secretariat: Tadachika NAKAYAMA, Nagaoka University of Technology

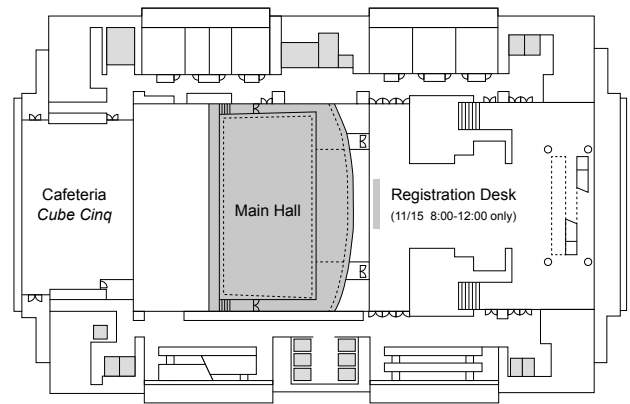
<http://etigo-nagaokaut.ac.jp/foresight/top.html>

Floor Plan

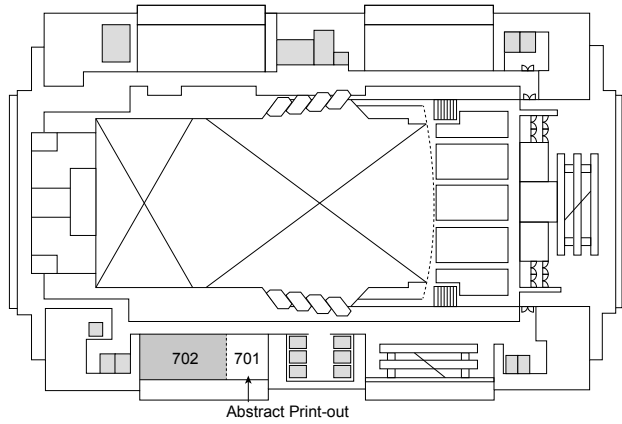
3F



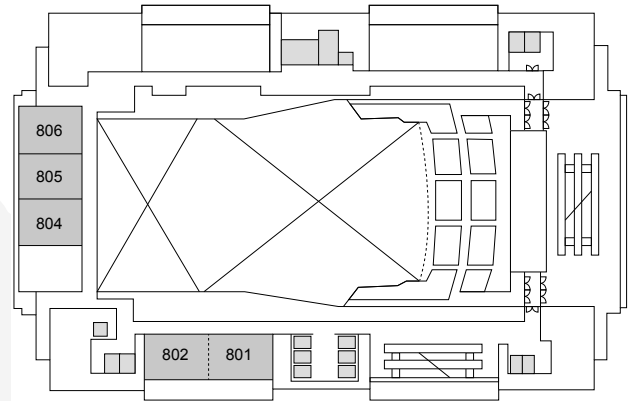
5F



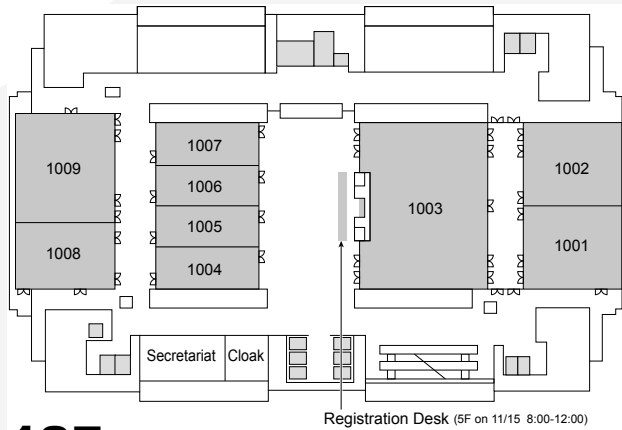
7F



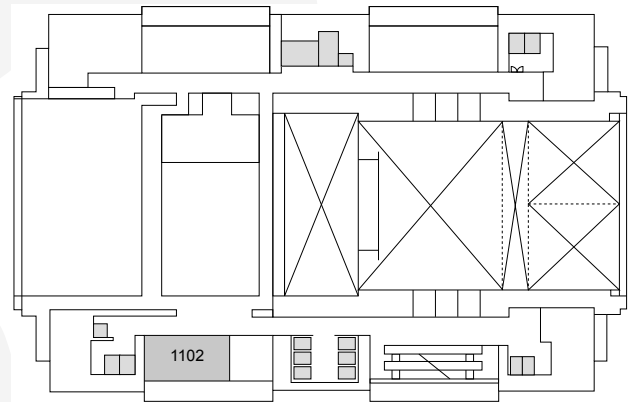
8F



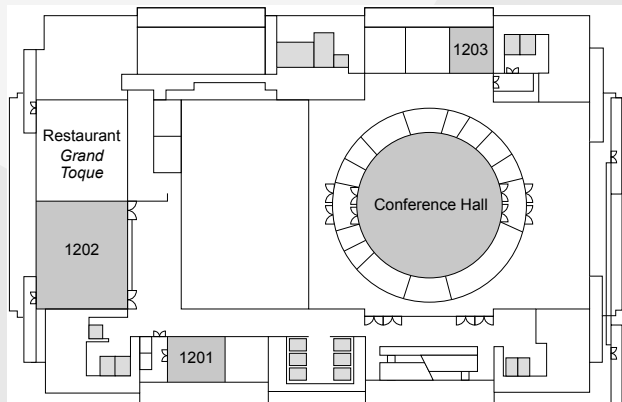
10F



11F

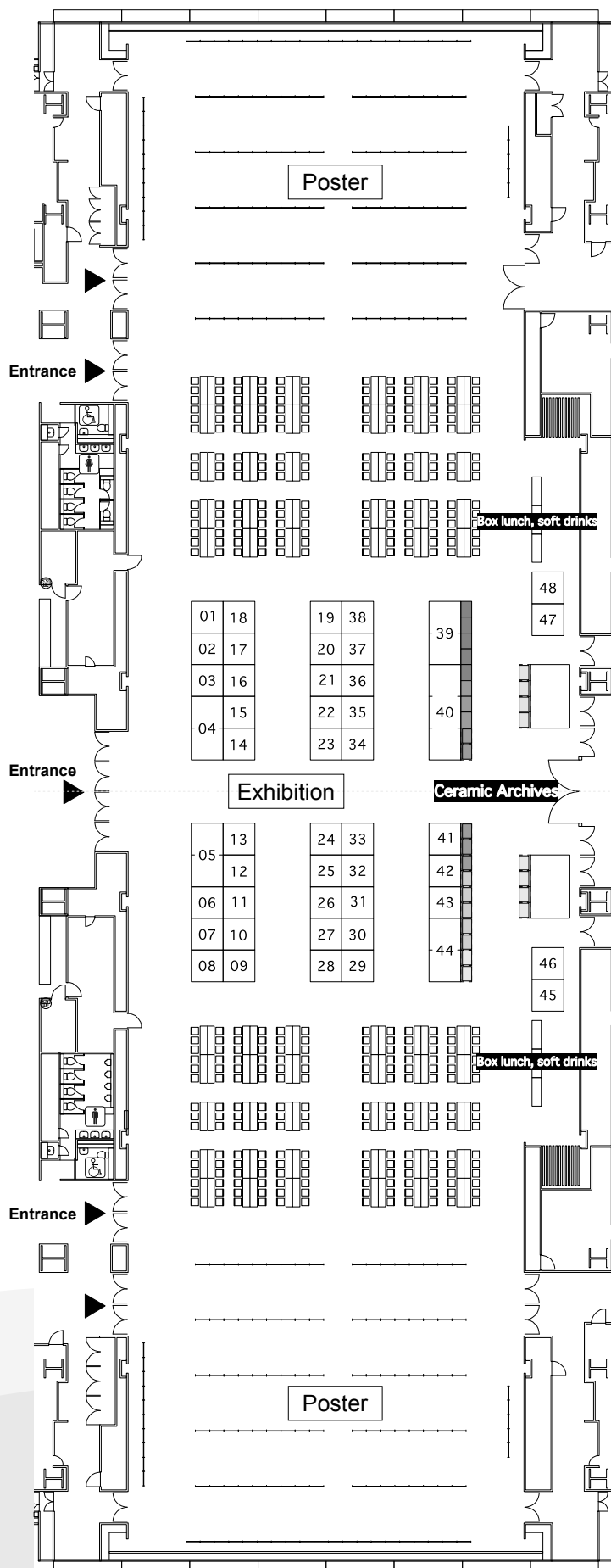


12F





Exhibition Hall Floor Map / Exhibitor List



Exhibitor (alphabetical order)	Booth No.
Advanced Manufacturing Research Institute, National Institute of Advanced Industrial Science and Technology (AIST)	44
Asahi Glass Co. Ltd.	33
Avio Sales Co., Ltd.	45
BEL JAPAN	06
Bridgestone Corporation	03
Bruker AXS K.K.	26
DAIKEN CHEMICAL CO., LTD.	12
DENKI KAGAKU KOGYO K.K.	27
EXPERT SYSTEM SOLUTIONS S.R.L.	16
Fuji Dempa Kogyo Co., Ltd.	09
Gunze Limited / Institute of Energy Science and Technology Co, Ltd.	32
HAKUSUI TECH CO., LTD.	24
Hysitron Inc.	31
IKETANI SCIENCE AND TECHNOLOGY FOUNDATION	47
INABA RUBBER CO., LTD.	35
INAX Corporation	08
International Centre for Diffraction Data	23
IOP Publishing	46
ISHIKAWA TRADING CO., LTD.	21
ISMANJ Corporation	11
Iwatsu Test Instruments Corporation	10
KIYOKAWA Plating Industry Co., Ltd.	22
KOTOBUKI INDUSTRIES CO., LTD.	28
Krosaki Harima Corporation	18
KYOCERA Corporation	04
LAEIS GmbH	17
MARUSHO DENKI CO., LTD.	07
Murata Manufacturing Co., Ltd.	38
Nagaoka University of Technology	40
Nano/Micro Structure Tectonics, SPRC-JWRI, Osaka University	41
National Institute for Materials Science	39
NEOARK Corporation	13
NGK INSULATORS, LTD.	05
NGK SPARK PLUG CO., LTD.	29
NIKKATO CORPORATION	01
Nippon Electric Glass Co., Ltd.	19
Noritake Co., Limited	20
Open Advanced Research Facilities Initiative Project ADMIRE, Kyoto University	42
Rigaku Corporation	37
SAKAI CHEMICAL INDUSTRY CO., LTD.	36
SHIKEN Inc. / Osaka Prefecture University Physical Chemistry Group	43
SPS SYNTEX INC.	14
Stereo Fabric Research Association	30
TDK Corporation	02
The Ceramic Society of Japan	48
TOCALO Co., Ltd.	15
TOTO LTD.	34
TYK CORPORATION	25